

So. California
Carnival Glass Club Convention
Saturday, March 9
9:30 a.m.

SC 69



SC 35



SC 78



SC 9



SC 277



SC 274

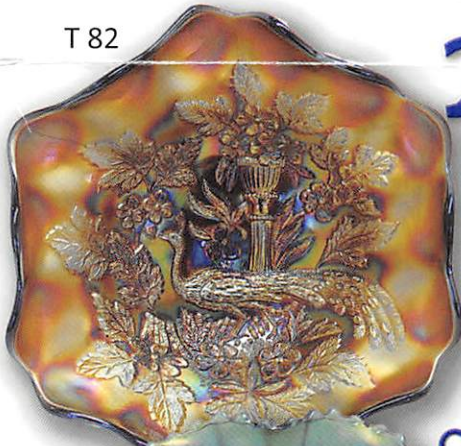
Carnival Glass 2019 Auctions

T 6 and 280

Texas Carnival
Glass Club Convention
Saturday, March 23
9:30 a.m.

Open to the Public

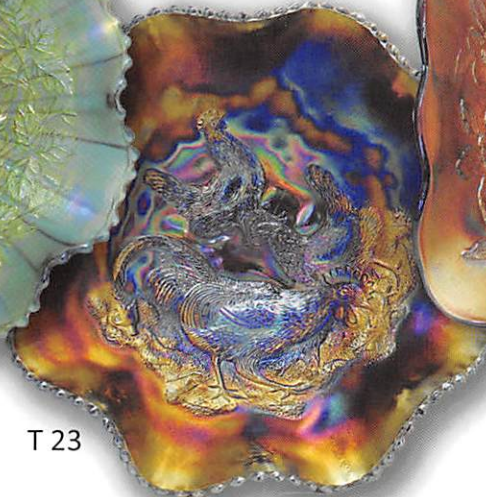
T 112



T 82



T 10



T 23



Seeck Auctions
Jim & Jan Seeck
641-424-1116



Southern California Carnival Glass Club Convention

Saturday, March 9, 2019 — 9:30 A.M.
*Azure Hotel & Suites, 1945 E. Holt Blvd.
Ontario, California 91764*

Texas Carnival Glass Club Convention

Saturday, March 23, 2019 — 9:30 A.M.
*Wyndham Dallas Suites- Park Central
7800 Alpha Road, Dallas, Texas 75240*

Bill and Jane Kenney Collection

Delbert Johnston Collection

◆◆◆
Open to the Public

◆◆◆
Previews: Friday Evenings

ABSENTEE & LIVE BIDDING is available on-line through Auction Flex at: www.seeckauction.com

NO BUYER'S PREMIUM -- EMAIL: jimjan@seeckauction.com

Lodging

March 9 Auction: If staying at the Hotel, call direct (Press 0) for room reservations: 909-390-7778. Cutoff date for rate is Feb 22nd, 2019. San Diego / Southern Calif. Convention info: Contact Jeff Adams at 661-718-3831 or jeffnadine@msn.com **Club Website:** www.socalcarnivalglassclub.com

March 23 Auction: If staying at the Hotel, Call the hotel directly at 972-233-7600 (option 2) to make your reservation. Let them know you are with the Texas Carnival Glass Club March 2019. Group code is: 03206822TC Hotel deadline is Wed. March 6th. Texas Club Convention info: Contact President Emmett Morgan at: 979-836-7896 **Club Website:** www.texas carnivalglass.org

Terms: Cash or Check, VISA, MasterCard and Discover accepted w/proper ID. 4% Clerking Fee on all purchases made using credit cards. Announcements made day of sale take precedence over any printed information.

** Sales Tax will be charged, please bring your tax-exempt numbers.

ABSENTEE-BIDDING OPTIONS

1) Call us by phone at: (641) 424-1116

2) Prebid: Enter your bids from our website into our online catalog through the Auction Flex system.

- *An exciting advantage of entering your bids online yourself,* is the option to be notified by email if you are outbid on an item. You will know when you are outbid on an item and you can increase your bid on that item or bid on something else.

3) Live Phone Bidding: Is available on pieces with an estimated sale price of \$500 or more.

If you would like to participate in live phone bidding, contact us by the Thursday before the auction.

4) Real-time Bidding: Bid live during the auction through Auction Flex live webcast bidding.

There is a \$7 handling charge for each successful bid. Shipping and insurance charges are additional.

Bidders will be notified by phone/email if their bid(s) are successful. This will be done 1 - 3 days after the auction.

BID INCREMENTS:

| | | | |
|-------------------------|-------------------------|--------------------|-------------------------|
| \$1 - \$100/\$5 | \$100 - \$200/\$10 | \$200 - \$700/\$25 | \$700 - \$1,500/\$50 |
| \$1,500 - \$3,000/\$100 | \$3,000 - \$5,000/\$250 | \$5000+ | Auctioneer's Discretion |

◆◆◆ Saturday, March 9 ◆◆◆

- | | |
|--|---|
| ___ 1. Valentine 10" ruffled bowl - marigold | ___ 14. Scroll Embossed 7" ruffled bowl w/file back - purple - irid. spots in bowl |
| ___ 2. Windmill 8" round bowl - smoke - nice | ___ 15. Cherry Chain chop plate- marigold- super pretty, very rare |
| ___ 3. Windmill 8" round bowl - purple - nice | ___ 16. Fishnet epergne - peach opal - lily has been glued into the base |
| ___ 4. Maize 6 1/2" vase w/blue stalk - small bruise on top edge | ___ 17. Little Fishes 10" ftd ruffled bowl - blue - manufacture peeling around base |
| ___ 5. Maize cruet w/blue stalk | ___ 18. Little Fishes 10" ftd ruffled bowl - marigold - very nice |
| ___ 6. Maize salt & peppers | ___ 19. Grape & Cable 5 pc. whiskey set - purple - nice set |
| ___ 7. Star of David ruffled bowl - purple - super pretty | ___ 20. Grape & Cable 7 pc. whiskey set - marigold - typical nick by stopper hole |
| ___ 8. M'burg Little Stars 7" IC shaped bowl - green - satin, scarce in this shape | ___ 21. M'burg Little Stars 7" ruffled bowl - amethyst - satin |
| ___ 9. Rustic 18" funeral vase - white - scarce & very nice | ___ 22. Poppy Show 9" plate - green - scarce color, tiny chip off back edge |
| ___ 10. Rustic 18" funeral vase - green - super pretty | ___ 23. Poppy Show 9" plate - blue - super pretty w/electric highlights |
| ___ 11. Rustic 21" funeral vase - amethyst - another real beauty! | |
| ___ 12. Rustic 18" funeral vase - blue - a beauty | |
| ___ 13. Rustic 21" funeral vase - marigold - nice, even color from top to bottom w/beautiful irid. | |

- ___ 24. Poppy Show 9" plate - ice blue - scarce
 ___ 25. Poppy Show 9" plate - white - chip on collar base & chip on poppy
 ___ 26. Poppy Show 9" plate - marigold - epoxy on collar base
 ___ 27. Shell & Sand ruffled bowl - purple - pretty, has a polished point
 ___ 28. Shell & Sand ruffled bowl - marigold - pretty
 ___ 29. Octagon lg size water pitcher & 3 tumblers - purple
 ___ 30. Daisy Wreath low round bowl - peach opal
 ___ 31. N's Thin Rib 8" JIP vase - purple - very pretty for these
 ___ 32. Grape & Cable hatpin holder - ice blue - very rare color, small chip on bottom of one foot, has a smokey blue look to it
 ___ 33. Grape & Cable hatpin holder - green - nice
 ___ 34. Grape & Cable hatpin holder - purple
 ___ 35. Grape & Cable hatpin holder - marigold
 ___ 35a. Hattie chop plate - purple - super pretty, very scarce & desirable
 ___ 36. Chrysanthemum ruffled bowl - green - scarce color for these
 ___ 37. Peacock at the Fountain ruffled fruit bowl - blue - pretty
 ___ 38. Peacock at the Fountain ruffled fruit bowl - marigold - nice
 ___ 39. Dragon & Lotus IC shaped bowl - amber - nice example
 ___ 40. M'burg Seacoast pin tray - green - very nice, hard to find perfect
 ___ 41. M'burg Seacoast pin tray - amethyst - very nice, hard to find perfect
 ___ 42. Dugan Cherries 10" ruffled bowl - peach opal
 ___ 43. M'burg Wild Rose sewing lamp - amethyst - 10 1/4" tall, 7" base, very rare lamp, open bubble on base which cannot be seen from the top
 ___ 44. Lattice & Points 7 1/2" vase - purple
 ___ 45. Mikado giant ruffled compote - blue - scarce item
 ___ 46. Mikado giant ruffled compote - marigold - very pretty for a marigold
 ___ 47. Stippled Three Fruits 9" plate w/ribbed back - blue - scarce, nice
 ___ 48. Stippled Three Fruits 9" plate w/ribbed back - marigold
 ___ 49. Poppy pickle dish - marigold on custard - super rare & this one is a beauty, has unusual 2" crack on seam of bowl
 ___ 50. Poppy pickle dish - aqua opal - pastel, nice, couple small nick on base
 ___ 51. Poppy pickle dish - ice blue - pretty, heat check by seam in base
 ___ 52. Poppy pickle dish - white - general roughness around collar base
 ___ 53. Poppy pickle dish - green - pretty
 ___ 54. Poppy pickle dish - purple - pretty
 ___ 55. Field Flower 7 pc. water set - purple - nice, one tumbler has epoxy on base
 ___ 56. M'burg Strawberry Wreath ruffled sauce - marigold - radium, super
 ___ 57. M'burg Nesting Swan ruffled bowl - green - satin
 ___ 58. M'burg Nesting Swan ruffled bowl - amethyst - satin, irid. spots
 ___ 59. M'burg Nesting Swan ruffled bowl - marigold - satin, very nice
 ___ 60. Broken Arches 8 pc. punch set - purple - super pretty set, quite scarce, bowl is pretty all the way around and inside
 ___ 61. Persian Medallion rose bowl - marigold
 ___ 62. Hearts & Flowers ruffled compote - ice green - very pretty irid., scarce
 ___ 63. Hearts & Flowers ruffled compote - ice blue - scarce color
 ___ 64. Hearts & Flowers ruffled compote - green - pretty, scarce
 ___ 65. Hearts & Flowers ruffled compote - aqua opal - butterscotch
 ___ 66. Hearts & Flowers ruffled compote - blue - electric highlights
 ___ 67. Hearts & Flowers ruffled compote - purple - very pretty
 ___ 68. Hearts & Flowers ruffled compote - marigold - nice
 ___ 69. King Spider hatpin - dark - very rare & highly desirable
 ___ 70. Flower Arc or Garden Path hatpin - dark
 ___ 71. Three Hearts hatpin - dark
 ___ 72. Strawberry hatpin - amber - scarce & desirable
 ___ 73. Bars & Beads hatpin - dark
 ___ 74. Piazza hatpin - dark
 ___ 75. Lot of 3 black glass hatpins - non iridized
 ___ 76. Owl hatpin - blue - non iridized
 ___ 77. Lions round bowl - marigold
 ___ 78. Butterfly & Tulip square bowl - purple - collector's classic, very pretty
 ___ 79. Grape & Cable perfume bottle - marigold
 ___ 80. Peacocks 9" plate w/ribbed back - ice blue - very pretty plate, scarce color
 ___ 81. Peacocks 9" plate w/plain back - green - scarce
 ___ 82. Peacocks 9" plate w/ribbed back - blue - scarce, nice
 ___ 83. Peacocks 9" plate w/ribbed back - purple - scarce
 ___ 84. Stippled Peacocks 9" plate w/ribbed back - marigold - nice
 ___ 85. Peacocks 9" plate w/ribbed back - ice green
 ___ 86. Peacocks 9" plate w/ribbed back - white
 ___ 87. Wreathed Cherry water pitcher w/1 tumbler - purple - scarce
 ___ 88. Sowerby cvd hen on nest - blue - couple small nicks under rim of top
 ___ 89. Sowerby cvd hen - marigold - has original Sowerby label, very cool
 ___ 90. Brazier's Candies handgrip advertising plate - amethyst - scarce
 ___ 91. Brocaded Acorn 3 pc. console set - ice blue - scarce, nice
 ___ 91a. Aurora Pearls decorated bride's bowl - white - very pretty
 ___ 92. Orange Tree ruffled fruit bowl - blue - nice
 ___ 93. Orange Tree ruffled fruit bowl - marigold - nice
 ___ 94. Poppy Show ruffled bowl - ice blue - scarce, nice
 ___ 95. Poppy Show ruffled bowl - white
 ___ 96. Two Flowers ftd ruffled master bowl - lime green - scarce color
 ___ 97. Diamond & Sunburst 7 pc. wine set - purple - one wine has small chip on base
 ___ 98. Brooklyn Bridge 10 ruffled bowl - marigold - very nice example
 ___ 99. Stippled Three Fruits Medallion spt ftd ruffled bowl - aqua opal - butterscotch, nice
 ___ 100. M'burg Trout & Fly 3 in 1 edge bowl - amethyst - satin, scarce
 ___ 101. Four Flowers Variant 9" plate - green - super pretty
 ___ 102. Daisy & Drape flared out vase - aqua opal - always in demand
 ___ 103. Captive Rose 9" plate - blue - shallow chip on base
 ___ 104. Grape & Cable candlesticks - marigold - matching pair
 ___ 105. Lattice & Poinsettia ftd ruffled bowl - blue - scarce, nice
 ___ 106. Lattice & Poinsettia ftd ruffled bowl - marigold - nice
 ___ 107. Grape & Cable midsize 17 pc. punch set - marigold - would call this pastel marigold, the cups even match, super pretty
 ___ 108. Grape & Cable small size 10 pc. punch set - purple - pretty set
 ___ 109. Little Barrel - marigold
 ___ 110. Four Flowers Variant low ruffled bowl - purple - pretty, scarce
 ___ 111. Tree Trunk midsize 13" vase w/plunger base - marigold - always hard to find w/the plunger base
 ___ 112. Fenton's Peacock at Urn IC shaped bowl - blue
 ___ 113. Fenton's Peacock at Urn IC shaped bowl - marigold
 ___ 114. Fluffy Peacock water pitcher w/1 tumbler - green - pretty pitcher
 ___ 115. Estate perfume - smoke - scarce
 ___ 116. Four Flowers Variant 11" ruffled bowl - purple - rare larger size, pretty
 ___ 117. Butterfly & Berry hatpin holder - marigold - tiny chip on side of claw on one foot
 ___ 118. Butterfly & Berry hatpin holder - blue - fantastic irid., one foot has been polished
 ___ 119. Embroidered Mums ruffled bowl w/ribbed back - marigold
 ___ 120. M'burg Wild Rose lamp - green - 11" tall, 6 1/2" base, extremely rare & nice
 ___ 121. Panther 5 pc. round berry set - marigold
 ___ 122. Peacocks PCE bowl w/ribbed back - green - nice
 ___ 123. Poppy Show vase - marigold - very pretty, may have a slight blue tint to base
 ___ 124. Thistle banana boat - blue - pretty
 ___ 125. Buzz Saw small size cruet - green - chip on top of stopper
 ___ 126. Heavy Grape master berry bowl - purple - pretty
 ___ 127. Dragon & Strawberry IC shaped bowl - marigold - scarce
 ___ 127a. Imperial Grape 11" ruffled bowl - purple - very pretty

- ___ 128. Diamond Lace 7 pc. water set - purple - pretty set
 ___ 129. Little Fishes IC shaped ftd bowl - marigold
 ___ 130. Good Luck ruffled bowl w/ribbed back - purple
 ___ 131. Good Luck ruffled bowl w/BW back - green - chip on point
 ___ 132. **Tree Trunk 10" vase - aqua opal - very scarce & highly desirable, nice**
 ___ 133. Peacock & Grape spt ftd 9" plate - green - hard to find, chip in pattern
 ___ 134. Orange Tree loving cup - blue - nice
 ___ 135. Orange Tree loving cup - marigold
 ___ 136. Butterfly & Fern water pitcher - amethyst
 ___ 137. Butterfly & Fern 4 pc. water set - marigold
 ___ 138. **N's Corn vase w/plain base - marigold - always in demand**
 ___ 139. **N's Corn vase w/plain vase - green - scarce color**
 ___ 140. N's Corn vase w/plain base - purple - base has been repaired
 ___ 141. N's Corn vase w/plain base - white
 ___ 142. N's Corn vase w/stalk base - ice green
 ___ 143. Peacock at the Fountain master berry bowl - purple
 ___ 144. Vintage lg size epergne - green - scarce
 ___ 145. Vintage small size epergne - green
 ___ 146. Victorian ruffled bowl - purple - scarce
 ___ 147. **Coral 9" plate - marigold - very nice for these - rare plate**
 ___ 148. M'burg Holly Sprig deep crimped edge 6" bowl - green - radium, very nice
 ___ 149. Panther ruffled master berry bowl - blue - nice
 ___ 150. Drapery 7 1/2" vase - ice green
 ___ 151. Drapery 7" vase - marigold - chips on feet
 ___ 152. **Fuchsia Basket hatpin - blue - rare**
 ___ 153. Flying Bat hatpin - dark
 ___ 154. Plumes & Buckle hatpin - dark - pin attached with a piece of rubber
 ___ 155. Hearts & Cross hatpin - dark
 ___ 156. Sun's Up hatpin - lavender
 ___ 157. Banded Criss Cross hatpin - dark
 ___ 158. Spider hatpins (2) - lavender & amber - non iridized
 ___ 159. Lot of 3 hatpins - 2 are not iridized, 1 has light irid w/epoxy on edge
 ___ 160. Ten Mums CRE bowl - blue - has an irid. spot
 ___ 161. **Zippered Loop 11" kerosene lamp - marigold - 6 1/4" base, nice**
 ___ 162. M'burg Boutonniere ruffled compote - green - radium
 ___ 163. **Acorn Burrs 7 pc. water set - purple - always in demand**
 ___ 164. **Acorn Burrs 4 pc. table set - purple**
 ___ 165. Fisherman's mug - peach opal - rare color
 ___ 166. Fisherman's mug - marigold - super pretty
 ___ 167. Stag & Holly lg size ftd IC shaped bowl - blue
 ___ 168. Dragon & Lotus spt ftd IC shaped bowl lime green opal - scarce & very nice, nick on cleats
 ___ 169. Strawberry 9" plate w/BW back - green - pretty
 ___ 170. **Australian Thunderbird lg size ruffled bowl - dark**
 ___ 171. Hearts & Flowers ruffled bowl w/ribbed back - ice blue - nice
 ___ 172. Corn bottle - smoke - nice example
 ___ 173. Corn bottle - marigold - dark, pretty
 ___ 174. Corn bottle - green - tiny pinpoint on top edge
 ___ 175. Acanthus deep round bowl - purple - super - couple tiny pinpoints around edge
 ___ 176. Rose Show ruffled bowl - aqua opal - pastel w/nice opal, pretty, epoxy on rose
 ___ 177. Enameled Radiance syrup - clear w/light irid.
 ___ 178. Grape & Cable banana boat - purple
 ___ 179. **Zippered Loop 8" kerosene lamp - smoke - 4 3/4" base**
 ___ 180. **Zippered Loop 8" kerosene lamp - marigold - 4 3/4" base**
 ___ 181. Scroll Embossed 9" plate - purple
 ___ 182. Old Rose Distilling / Grape & Cable Variant 9" plate w/ribbed back - green
 ___ 183. Diamond Point 7 1/3" squatty vase - marigold - has crack \ around base
 ___ 184. Paneled Dandelion tankard water pitcher - amethyst - bottom point filled with epoxy
 ___ 185. Paneled Dandelion 5 pc. water set - blue - silvery
 ___ 186. Concord 3 in 1 edge bowl - marigold
 ___ 187. Drapery rose bowl - purple - nice
 ___ 188. M'burg Peacock at Urn master IC shaped bowl - marigold - satin, nice
 ___ 189. Australian Kingfisher lg ruffled bowl - marigold - base has been buffed down
 ___ 190. Ribbon Tie low 3 in 1 edge bowl - blue
 ___ 191. Horse Medallion ftd nut bowl - blue
 ___ 192. **Formal hatpin holder - purple - very scarce item**
 ___ 193. **Formal hatpin holder - marigold - light on irid.**
 ___ 194. **Orange Tree 8 pc. ruffled punch set - white - scarce set**
 ___ 195. Orange Tree 9 pc. round punch set - blue
 ___ 196. Orange Tree 9" plate - blue
 ___ 197. **Peacocks ruffled bowl w/rib back- aqua opal- pastel, nice**
 ___ 198. Peacocks ruffled bowl w/ribbed back - purple - minor pinpoint between points
 ___ 199. **Fashion water pitcher - purple - rare color**
 ___ 200. Dragon & Lotus ruffled bowl - peach opal - very pretty, scarce
 ___ 201. **Fern Brand Chocolates handgrip advertising plate - purple - always desirable**
 ___ 202. N's Peacock at the Fountain water pitcher & 1 tumbler - marigold
 ___ 203. Dugan's Peacock at the Fountain water pitcher - purple
 ___ 204. Dugan's Peacock at the Fountain 7 pc. water set - blue
 ___ 204a. **M'burg Trout & Fly IC form bowl - green - rad., nice**
 ___ 205. M'burg Trout & Fly IC shaped bowl - marigold - wear on trout's mouth
 ___ 206. Wishbone 10" PCE bowl w/BW back - purple
 ___ 207. Mayflower lamp shade on electric base - smoke - pretty irid.
 ___ 208. Fenton's Grape & Cable ruffled fruit bowl - green - Persian Medallion interior
 ___ 209. Scroll Embossed 7" ruffled bowl w/plain back - purple - pretty
 ___ 210. **M'burg Wild Rose 10 1/4" lamp - marigold - 6 1/4" base, great piece**
 ___ 211. Imperial Grape water pitcher - violet blue - very scarce color
 ___ 212. **Grape & Cable pin tray - green - scarce color, manufacture spot on edge**
 ___ 213. **Grape & Cable pin tray - purple**
 ___ 214. **Grape & Cable pin tray - marigold**
 ___ 215. Plaid ruffled bowl - blue - scarce, nice
 ___ 216. Scale Band 5 pc. water set - marigold - very scarce set, pinpoint on top edge of pitcher
 ___ 217. Floral & Optic ftd deep round bowl - red - stretch
 ___ 218. Little Fishes deep round ftd master bowl - blue
 ___ 219. Little Fishes deep round ftd master bowl - marigold
 ___ 219a. **Lotus & Grape 9" plate - ameth. - pretty, rare Fenton plate**
 ___ 219b. **Lotus & Grape 9" plate - green - scarce, very pretty**
 ___ 220. Rambler Rose 6 pc. water set - blue
 ___ 221. **Orange Tree hatpin holder - amethyst - extremely rare color for these**
 ___ 222. Orange Tree hatpin holder - green - pretty, chip on top of foot
 ___ 223. Orange Tree hatpin holder - blue
 ___ 224. Orange Tree hatpin holder - marigold
 ___ 225. **Scarab Shell hatpin - amethyst - scarce, nick on edge**
 ___ 226. Border Path hatpin - dark - yellow type irid.
 ___ 227. **Four Leaf Clover & Jewel hatpin - dark - nice**
 ___ 228. Faceted Dome hatpin - dark
 ___ 229. Top of the Morning - dark
 ___ 230. **Star of David & Baguettes hatpin - dark - scarce**
 ___ 231. Diamond Sphere hatpin - dark
 ___ 232. Rooster hatpins - green & blue
 ___ 233. M'burg Many Stars ruff. bowl - amethyst - radium, 6 point star
 ___ 234. **Unusual compote or sherbet - green - pretty sure it is old, US Glass?, don't have a name, have not seen this before, pretty neat piece! chip on base**
 ___ 235. **Dandelion tankard water pitcher & 1 tumbler - marigold-dark & nice**
 ___ 236. Imperial Grape water carafe - purple
 ___ 237. Beaded Cable rose bowl - blue
 ___ 238. **Loganberry vase - marigold - nice**

- ___ 239. Grape & Cable butter dish - purple
- ___ 240. Soda Gold water pitcher & 1 tumbler - clambroth
- ___ 241. Fenton's Peacock at Urn ruffled bowl - blue
- ___ 242. M'burg Peacock at Urn Shotgun 3 in 1 edge 7" bowl - amethyst - radium, scarce
- ___ 243. Chrysanthemum lg size ftd IC shaped bowl - marigold - pretty
- ___ 244. Imperial Grape 7 pc. wine set - purple - nice
- ___ 245. M'burg Fleur de Lis 3 in 1 edge dome ftd bowl - marigold - satin, typical chip on saw tooth edge of base
- ___ 246. Tree Trunk 13" midsize vase - purple
- ___ 247. Leaf Chain 7" plate - white - pretty
- ___ 248. Floral & Grape 6 pc. water set - ameth. - 3 tumblers have chips
- ___ 249. Thumbprint & Ovals vase - marigold - bruise in center of base
- ___ **250. N's Town Pump - purple - collector's favorite**
- ___ 251. Sunflower spt ftd ruffled bowl - green - has stretchy type irid.
- ___ 252. Ripple 10 1/2" vase - aqua teal - 2 7/8" base
- ___ 253. M'burg Sunflower pin tray - amethyst - very nice example, small nick on back of one flower petal
- ___ **254. M'burg Sunflower pin tray - green - very scarce to find perfect**
- ___ 255. M'burg Hanging Cherries water pitcher - amethyst - satin & nice, has 3" crack at bottom of handle
- ___ 256. M'burg Leaf & Little Flowers compote - amethyst - radium
- ___ 257. Good Luck PCE bowl w/ribbed back - marigold
- ___ 258. Ripple 9" vase - purple - nice - 3 3/8" base
- ___ **259. Lacy Dewdrop water pitcher - iridized milk glass - very scarce**
- ___ 260. Grape & Cable sweetmeat - purple
- ___ 260a. Stretch Glass 5" cupped in small bowl - wisteria - a cutie
- ___ 261. Zippered Loop 8" kerosene lamp - smoke - 4 1/4" base
- ___ 262. Singing Birds mug - aqua opal - butterscotch, chip on base
- ___ 263. Horse Medallion 7" ruffled bowl - blue
- ___ 264. Blossomtime ruffled compote - purple
- ___ 265. Lustre Rose 9" ruffled bowl - purple - pretty
- ___ **266. Banded Grape & Cable hatpin holder - marigold - dark & nice, not many banded ones around**
- ___ 267. Grape & Cable cologne bottle - marigold - pretty
- ___ **268. Grape & Cable dresser tray - marigold - nice**
- ___ 269. Grape & Cable powder jar - marigold - base is stippled, lid is not, lid has minor nick
- ___ 270. Wishbone 4 pc. water set - green - scarce, crack around handle of pitcher
- ___ 271. Grape & Cable candle lamp - purple - scarce
- ___ 272. Freefold 11" vase - purple - nice
- ___ 273. M'burg Peacock berry sauce - amethyst - radium
- ___ **274. Near Cut cologne bottle - green - very scarce & very nice!**
- ___ 275. Grape & Cable 7 pc. water set - purple
- ___ 276. Phoenix Consolidated 16" mermaid lamp shade - has some minor nicking around edges, rare shade
- ___ **277. M'burg Wild Rose 9 1/4" lamp - green - 5 7/8" base, very pretty lamp, rare**
- ___ 278. Round Up low ruffled bowl - white - pretty
- ___ **279. Homestead chop plate - purple - very scarce, nice, if extremely fussy, has tiny pinpoint on rim of Greek Key border**
- ___ **280. Acorn Burrs 8 pc. punch set - green - scarce set, always desirable, one punch cup has chip, small open bubble on bottom of base**